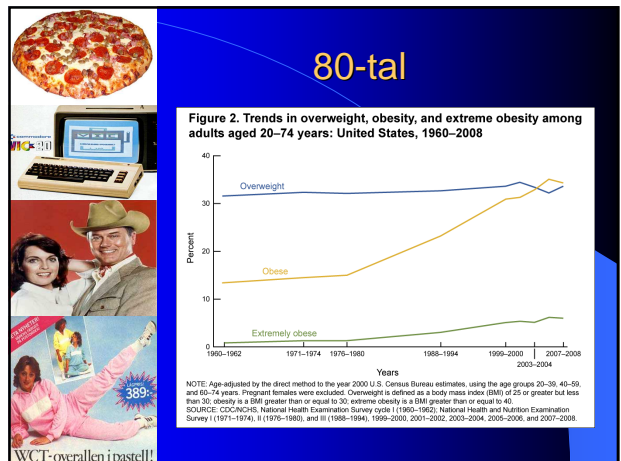


Viktrecidiv efter kirurgi

Data från SOS studien

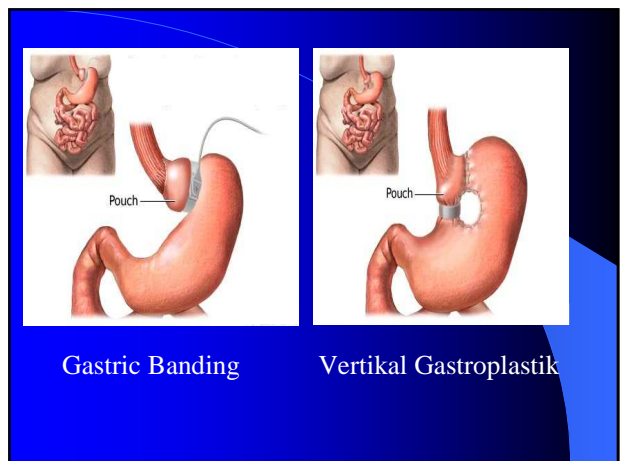
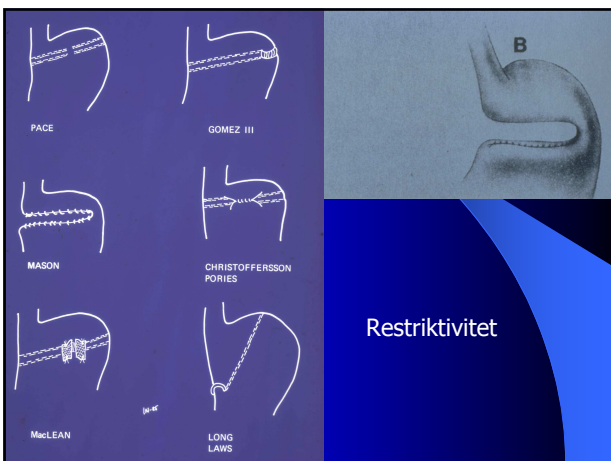
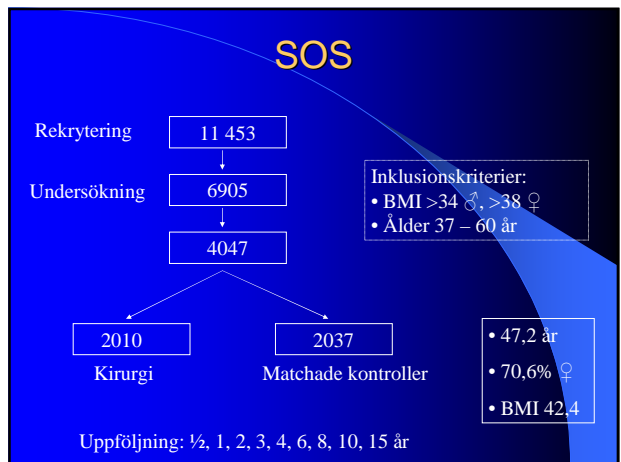
Ingemar Bolin
Kirurg kliniken
Universitetssjukhuset i Örebro



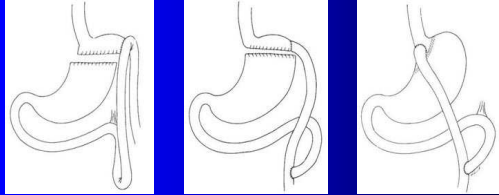
Mortalitet – Obesitas ?
Obesitas – Riskfaktorer för mortalitet ?
Mortalitet – Viktreduktion ?

Swedish Obese Subjects

Etikansökan Icke randomiserad Matchade kontroller



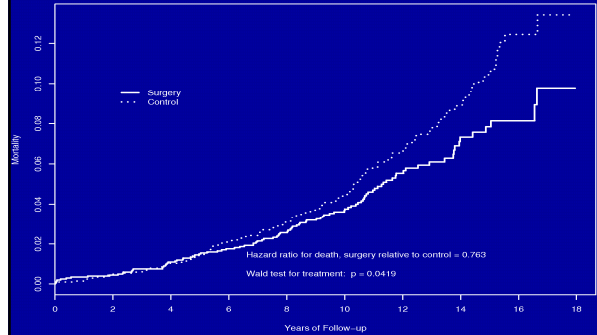
- 1967 Mason Gastric bypass
- 1977 Alden - suturmaskin
- 1977 Griffen - roux-en-Y
- 1980 Torres - minorsidan
- 1985 Linner - band kring stoma
- 1986 Fobi m.fl. - distal GBP



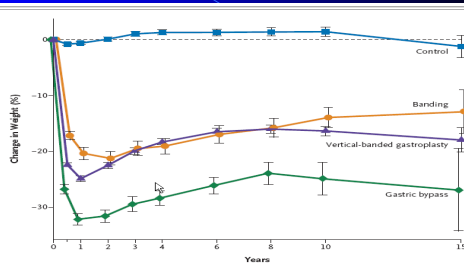
Mason EE, Ito C. Surg Clin North Am 1967

SOS

Cumulative mortality, all patients



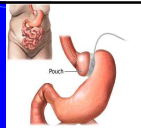
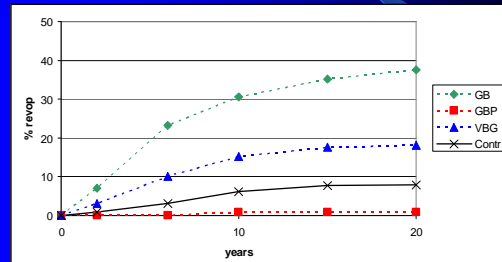
Vikt ned- och uppgång 15 år



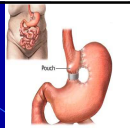
No. Examined	2037	1768	1660	1553	1490	1281	982	886	190
Control	376	363	357	328	333	298	267	237	52
Banding	1369	1298	1244	1121	1086	1004	899	746	108
Vertical-banded gastroplasty	265	245	245	211	209	166	92	58	10
Gastric bypass									

Figure 1. Mean Percent Weight Change during a 15-Year Period in the Control Group and the Surgery Group, According to the Method of Bariatric Surgery. I bars denote 95% confidence intervals.

Vad har hänt med individernas magsäckar efter 10 år ?



376 GB



1369 VBG

251 GB

56 GBP

2 VBG

3 Annat

14 "0"

32 Död

18 <10år

4 GB

140 GBP

1096 VBG

0 Annat

29 "0"

50 Död

45 <10 år



265 GBP

211 GBP

0 GB

1 VBG

0 Annat

1 "0"

18 Död

34 <10år

2037 Kontr

1736 Kontr

62 GBP

5 GB

30 VBG

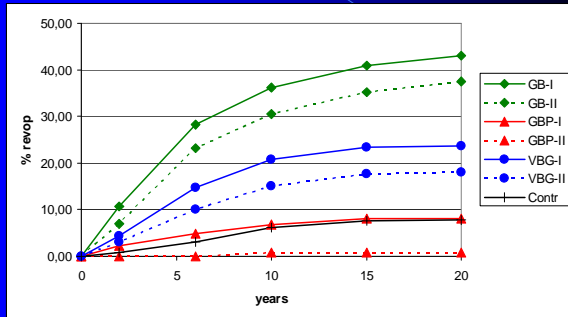
1 Annat

8 "0"

98 Död

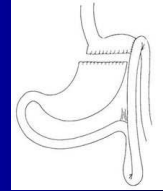
97 <10 år

Omoperationsfrekvens



Orsaker till Omoperation Gastric Bypass

- Ventrikelfickans storlek
- Stomats storlek
- Loop till Roux ben
- Delning av stapleraden
- Gastrogastrisk fistel



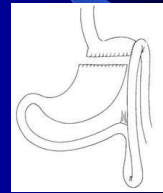
Gastrogastrisk fistel



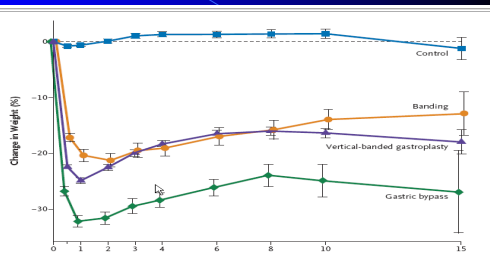
Fistel till urkopplade fickan

Orsaker till Omoperation Gastric Bypass

- Ventrikelfickans storlek
- Stomats storlek
- Loop till Roux ben
- Delning av stapleraden
- Gastrogastrisk fistel
- Svängande blodsocker



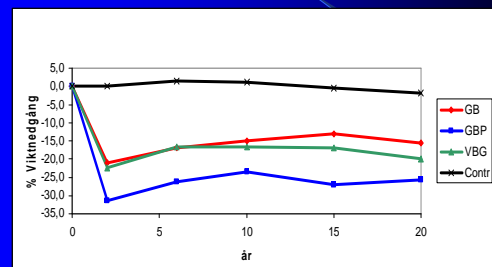
Vikt ned- och uppgång 15 år



No. Examined	2037	1768	1660	1553	1490	1281	982	886	190
Control	276	263	357	328	333	208	267	237	52
Banding	1369	1298	1244	1121	1086	1004	809	746	108
Vertical-banded gastroplasty	265	245	245	211	209	166	92	58	10

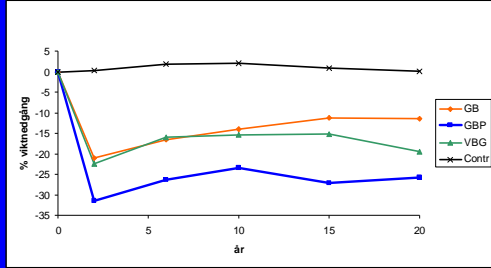
Figure 1. Mean Percent Weight Change during a 15-Year Period in the Control Group and the Surgery Group, According to the Method of Bariatric Surgery. 1 bars denote 95% confidence intervals.

% Viktnedgång, intention-to-treat 20 år



SOS

% Viktnedgång, icke revision 20 år



SOS

Viktrecidiv kontra dålig viktnedgång – skillnad ?

Hur mycket är att betrakta som dålig viktnedgång ?

10 års data SOS

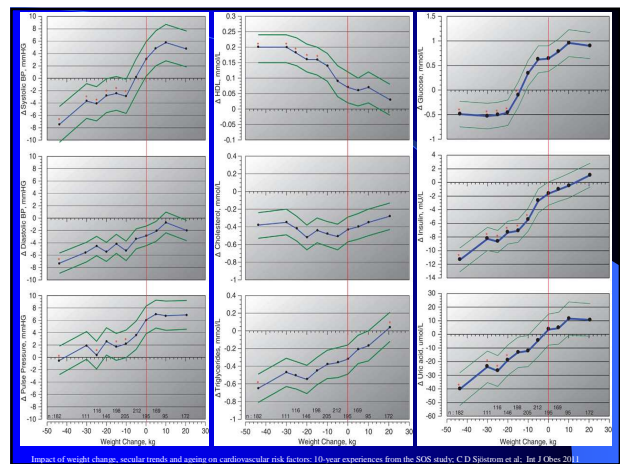
GBP n= 162

< 50 %EWL 64 individer = 40%

Medel viktnedgång efter 10 år = 56,4% EWL

80% av individerna ökar < 25% av förlorad vikt

Korrelation viktnedgång över tid - riskfaktorer ?



Impact of weight change, secular trends and ageing on cardiovascular risk factors: 10-year experiences from the SOS study, C.D. Sjöström et al., Int J Obes 2011

Tack